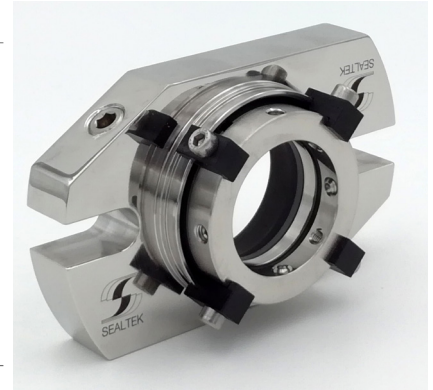
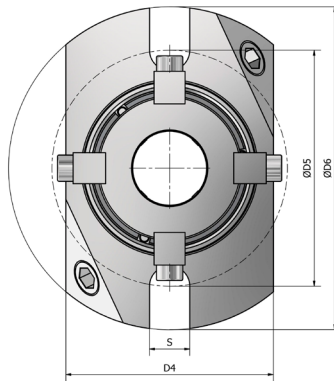
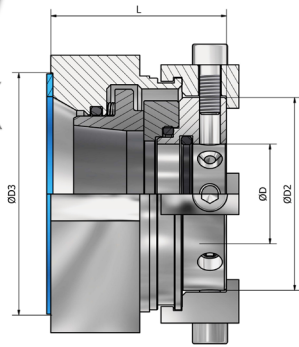




# STYLE 600 SL


SLEEVELESS CARTRIDGE SEAL  
TENUTE MECCANICHE SENZA BUSSOLA  
SELLOS MECANICOS SIN CAMISA



 The 600SL is the first cartridge mechanical seal to incorporate a conical stuffing box design, allowing it to greatly improve seal life in slurry and dirty fluid applications. With no seal parts inside the stuffing box, slurry contamination cannot clog the seal greatly increasing seal life. This new seal also incorporates a gland plate with flushing connection and large, solid seal faces manufactured from sintered materials mounted on flexible elastomers, which also act as shock absorbers. This seal offers great reliability under the harshest of working conditions.

**PATENTED EU1370506**

 La 600SL è la prima tenuta a cartuccia ad incorporare un'estensione conica della cassa stoppa, permettendole di migliorare sensibilmente la vita operativa della tenuta in applicazioni di slurry e fluidi carichi. Senza alcuna parte dentro la cassa stoppa, le particelle solide dei fluidi hanno spazio per circolare e non si depositano sulle facce di tenuta. Questa tenuta è dotata di flangia con connessione per flussaggio e massicce facce di tenuta realizzate in materiali sinterizzati montati su elastomeri flessibili, che agiscono anche da assorbitori di shock, e offre la più grande affidabilità alle condizioni operative più severe. **BREVETTO EU1370506**

 Este revolucionario diseño de sellado es el resultado del más intenso estudio de diseño de ingeniería imaginable. La primera innovación real en el mercado de los sellos durante muchos años.

Hasta ahora todos los sellos mecánicos de cartucho han sido diseñados con una camisa de eje integral. **PATENTE EU1370506**

TECHNICAL DATA / DATI TECNICI	
Metal parts <i>Parti metalliche</i>	G
Springs <i>Molle</i>	M5
Sliding face <i>Faccia di strisciamento</i>	A - B - Q1 - Q2 - DIAMOND
Max pressure <i>Pressione max</i>	Vacuum/Vuoto 700 mm Hg + 3,5 MPa**
Max speed <i>Velocità max</i>	25 m/sec**
O.RING	FKM - EPDM - FFKM - FEPM - TTV
*Upon shaft diameter and speed <i>*Variabile in dipendenza al diametro e alla velocità</i>	
**Depending on materials of sliding faces <i>**Variabile a seconda del materiale delle facce di strisciamento</i>	

D	In	D2	D3 int.	D3 ext.	D4	D5	D6	L	L2	S
24		42.0	47.0	58.0	67.0	76.0	104.0	41.0	22.5	13.0
25	1									
28	1.125	42.0	50.5	61.5	67.0	76.0	104.0	41.0	23.0	13.0
30		54.0	52.5	63.0	72.0	80.0	110.0	41.0	21.5	13.0
32	1.25									
33		54.0	55.5	65.5	72.0	80.0	110.0	41.0	21.5	13.0
35	1.375	61.0	57.5	68.0	81.0	89.0	128.0	41.0	21.5	13.0
38	1.5	61.0	60.0	72.0	81.0	89.0	128.0	41.0	21.5	13.0
40		61.0	62.5	73.0	81.0	89.0	128.0	41.0	21.5	13.0
43	1.625	65.0	65.2	75.5	86.0	100.0	142.0	41.0	21.5	14.0
45	1.75	65.0	66.8	77.8	86.0	100.0	142.0	41.0	21.5	14.0
48	1.875									
50	2	74.0	72.5	82.8	95.0	106.0	154.0	41.0	21.5	17.0
55	2.125	80.0	78.0	87.0	104.0	120.0	172.0	41.0	21.5	17.0
58	2.25	80.0	82.5	93.0	104.0	120.0	172.0	41.0	21.5	17.0
60										
	2.375									
65	2.5	87.0	91.4	101.5	124.0	134.0	180.0	45.0	26.5	17.0
	2.625									
70	2.75	87.0	97.0	108.0	124.0	134.0	180.0	50.0	26.5	17.0
75	2.875									
	3	113.0	105.0	120.5	136.0	148.0	200.0	55.0	26.5	19.0
80	3.125	114.0	110.0	130.0	136.0	148.0	200.0	55.0	26.5	19.0
85	3.25									
	3.375	123.0	113.8	132.8	150.0	160.0	220.0	55.0	26.5	20.0
90	3.5	123.0	123.8	140.8	150.0	160.0	220.0	55.0	26.5	20.0
	3.625									
95										
	3.75	134.0	130.0	146.5	164.0	176.0	240.0	55.0	26.5	20.0
	3.875									
100	4									

  
SEALTEK s.r.l.  
www.sealtek.com  
info@sealtek.com

All technical specifications contained in these technical data sheets are intended as guidelines. Sealtek s.r.l. must be informed about the precise conditions of application so that detailed information relating to specific cases can be provided.