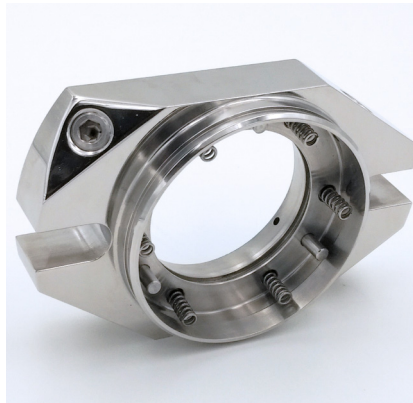



# STYLE 600 HD


STURDY SEAL ABLE TO WITHSTAND HEAVY MECHANICAL SHOCKS


TENUTA ROBUSTA IN GRADO DI RESISTERE A PESANTI SHOCK MECCANICI

SELLO RESISTENTE CAPAZ DE SOPORTAR CHOQUES MECÁNICOS FUERTES



 Style 600HD is a more robust design of the original Sleeveless seal. Large driving pins and anti-rotation pins ensure a greater torque resistance, and the multiple springs are as well oversized. With the addition of the revolutionary outside quench ring, the seal can be quickly upgraded for applications involving crystallizing or polymerizing fluids.

 Style 600HD è un design più robusto tenuta Style 600 SL. I grandi perni di trascinamento e quelli antirotazione garantiscono una maggiore resistenza alla torsione, così come le molle multiple che sono sovradimensionate. Con l'aggiunta del rivoluzionario anello di raffreddamento esterno, la tenuta può essere rapidamente aggiornata per applicazioni che coinvolgono fluidi cristallizzanti o polimerizzanti.

 El Estilo 600HD es un diseño más robusto que el sello sin mangas original. Los grandes pasadores de accionamiento y los pasadores antirotación garantizan una mayor resistencia al par y los múltiples resortes también están sobredimensionados. Con la adición del revolucionario anillo de enfriamiento exterior, el sello se puede actualizar rápidamente para aplicaciones que involucran fluidos de cristalización o polimerización.

## TECHNICAL DATA / DATI TECNICI

Metal parts <i>Parti metalliche</i>	G
Springs <i>Molle</i>	M5
Sliding face <i>Faccia di strisciamento</i>	A - B - Q1 - Q2 - DIAMOND
Max pressure <i>Pressione max</i>	Vacuum/Vuoto 700 mm Hg + 3,5 MPa**
Max speed <i>Velocità max</i>	25 m/sec**
O.RING	FKM - EPDM - FFKM - FEPM - TTV

*\*Upon shaft diameter and speed  
\*Variabile in dipendenza al diametro e alla velocità*

*\*\*Depending on materials of sliding faces  
\*\*Variabile a seconda del materiale delle facce di strisciamento*

  
SEALTEK s.r.l.  
www.sealtek.com  
info@sealtek.com

All technical specifications contained in these technical data sheets are intended as guidelines. Sealtek s.r.l. must be informed about the precise conditions of application so that detailed information relating to specific cases can be provided.

06-2024