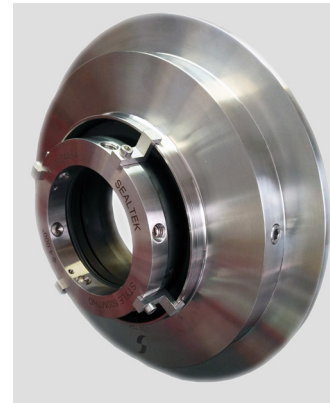





STYLE 600 MT

FOR METSO* PUMPS
PER POMPE METSO*
PARA BOMBAS METSO*



 Style 600MT is the sleeveless seal integrated inside a Metso* horizontal slurry pump stuffing box. Heavy duty arrangement is also available for increased resistance to particularly dense fluids, and diamond faces are suggested for low-lubrication media.

 Style 600 MT è la tenuta senza bussola integrata all'interno del premistoppa orizzontale della pompa per slurry Metso*. È disponibile anche una disposizione per impieghi gravosi per una maggiore resistenza a fluidi particolarmente densi e le facce diamantate sono consigliate per fluidi a bassa lubrificazione.

 El estilo 600MT es el sello sin mangas integrado dentro de un prensaestopas de bomba de lodo horizontal Metso*. También está disponible una disposición de servicio pesado para una mayor resistencia a fluidos particularmente densos, y se sugieren caras de diamante para medios de baja lubricación.

METSO* PUMP FRAME	SEALTEK SEAL (STANDARD)	SEALTEK SEAL (HEAVY DUTY)	SIZE mm
250	600MT058	600MT058-HD	58,50
300	600MT082	600MT082-HD	82,35
400	600MT101	600MT101-HD	101,15
500	600MT115	600MT115-HD	114,95
600	600MT130	600MT130-HD	129,95
750	600MT144	600MT144-HD	144,54

Shaft size can vary slightly - detailed information is always required


SEALTEK s.r.l.
www.sealtek.com
info@sealtek.com

All technical specifications contained in these technical data sheets are intended as guidelines. Sealtek s.r.l. must be informed about the precise conditions of application so that detailed information relating to specific cases can be provided.

06-2024

*Metso are trademarks of a third party without any link with Sealtek s.r.l.