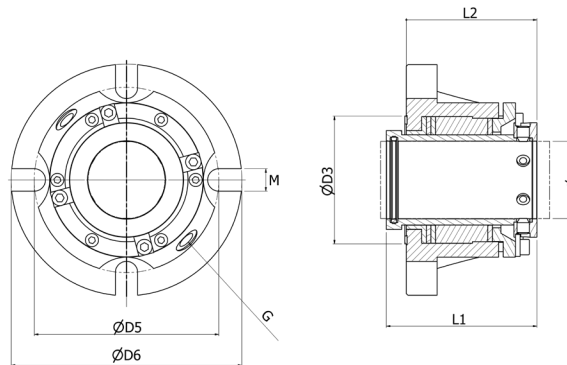





STYLE 907 TD

CARTRIDGE MOUNTED REFILLABLE SEAL - TOTAL DRY
TENUTA A CARTRUCCIA RICARICABILE - TOTAL DRY
SELLO RECARGABLE MONTADO EN CARTUCHO - TOTAL DRY



 Advanced sealing action. By replacing wear rings with high performance lip seals, Style 907TD ensures that no leakage can occur. The spring-loaded gland follower allows a visual control over the ZLS level, outlining the need of refills without actual leakage taking place. Particularly suitable when leakage is not allowed.

 Azione sigillante avanzata. Sostituendo gli anelli antiusura con guarnizioni a labbro ad alte prestazioni, lo stile 907TD garantisce che non si possano verificare perdite. Il premistoppa caricato a molla consente un controllo visivo del livello ZLS, evidenziando la necessità di rabbocchi senza che si verifichino perdite effettive. Particolarmente adatto quando non sono consentite perdite.

 Acción de sellado avanzada. Al reemplazar los anillos de desgaste con sellos de labio de alto rendimiento, el Estilo 907TD garantiza que no se produzcan fugas. El seguidor del casquillo accionado por resorte permite un control visual sobre el nivel de ZLS, delineando la necesidad de recargas sin que se produzcan fugas reales. Especialmente adecuado cuando no se permiten fugas.

TECHNICAL DATA / DATI TECNICI

Sealing compound	Unbleached PTFE, graphite, aramid fibers, food grade PTFE
O-rings	NBR, EPDM, FKM, FEPM, FFKM, graphite
Sleeve coating	Silicon carbide, DLC, ceramic
Metal parts	1.4571 CrNiMo Steel (316Ti), exotic alloys
Pressure	Max 4 MPa* (580 PSI)
Temperature	Max 260°C (500°F)
Speed	Max 25 m/s (4921 FPM)
*Actual pressure limit may vary.	

D	In	D3	D5	D6	L1	L2	M	G
24		58,0	80,0	104,0	85,0	73,0	13,0	2 x 3/8 GAS
25	1							
28	1,125	61,5	80,0	104,0	85,0	73,0	13,0	2 x 3/8 GAS
30		63,0	90,0	110,0	85,0	73,0	13,0	2 x 3/8 GAS
32	1,25							
33		65,5	100,0	110,0	85,0	73,0	13,0	2 x 3/8 GAS
35	1,375	68,0	100,0	128,0	85,0	73,0	13,0	2 x 3/8 GAS
38	1,5	72,0	100,0	128,0	85,0	73,0	13,0	2 x 3/8 GAS
40		73,0	100,0	128,0	85,0	73,0	13,0	2 x 3/8 GAS
43	1,625	75,5	106,0	142,0	98,0	85,0	14,0	2 x 3/8 GAS
45	1,75	77,8	106,0	142,0	98,0	85,0	14,0	2 x 3/8 GAS
48	1,875							
50	2	82,8	120,0	154,0	98,0	85,0	14,0	2 x 3/8 GAS
55	2,125	87,0	120,0	172,0	98,0	85,0	14,0	2 x 3/8 GAS
58	2,25							
60		93,0	120,0	172,0	98,0	85,0	17,0	2 x 3/8 GAS
	2,375							
65	2,5	101,5	134,0	180,0	98,0	85,0	17,0	2 x 3/8 GAS
	2,625							
70	2,75	108,0	134,0	180,0	98,0	85,0	17,0	2 x 3/8 GAS
75	2,875							
	3	120,5	148,0	200,0	98,0	85,0	19,0	2 x 3/8 GAS
80	3,125	130,0	148,0	200,0	105,0	91,0	19,0	2 x 3/8 GAS
85	3,25							
	3,375	132,8	160,0	220,0	105,0	91,0	20,0	2 x 3/8 GAS
90	3,5							
	3,625	140,8	160,0	220,0	105,0	91,0	20,0	2 x 3/8 GAS
95								
	3,75							
	3,875	146,5	176,0	240,0	105,0	91,0	20,0	2 x 3/8 GAS
100	4							


SEALTEK s.r.l.
www.sealtek.com
info@sealtek.com

All technical specifications contained in these technical data sheets are intended as guidelines. Sealtek s.r.l. must be informed about the precise conditions of application so that detailed information relating to specific cases can be provided.

06-2024