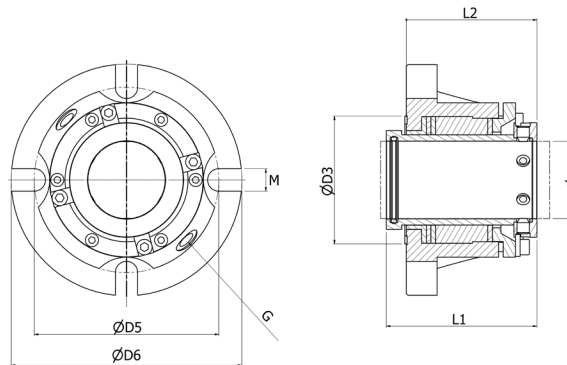





STYLE 907

HYBRID SEAL: CARTRIDGE MOUNTED REFILLABLE SEAL
 TENUTA IBRIDA: TENUTA A CARTUCCIA RICARICABILE
 SELLO HÍBRIDO: SELLO RECARGABLE MONTADO EN CARTUCHO



 This groundbreaking technology is the new evolution of sealing devices: it is such a departure from the traditional mechanical seal, that it can no longer be called by that name only. The hardware: Easy to install cartridge seal unit with low friction components. The software: Injectible self-lubricating sealing compound.

 Questa tecnologia innovativa rappresenta la nuova evoluzione dei dispositivi di tenuta: si discosta talmente dalla tradizionale tenuta meccanica che non può più essere chiamata solo con quel nome. L'hardware: unità di tenuta a cartuccia facile da installare con componenti a basso attrito. Il software: Pasta sigillante autolubrificante iniettabile.

 Esta tecnología innovadora es la nueva evolución de los dispositivos de sellado: se aleja tanto del sello mecánico tradicional que ya no se le puede llamar solo con ese nombre. El hardware: unidad de sello de cartucho fácil de instalar con componentes de baja fricción. El software: Compuesto sellador autolubrificante inyectable.

TECHNICAL DATA / DATI TECNICI

Sealing compound	Unbleached PTFE, graphite, aramid fibers, food grade PTFE
O-rings	NBR, EPDM, FKM, FEPM, FFKM, graphite
Sleeve coating	Silicon carbide, DLC, ceramic
Metal parts	1.4571 CrNiMo Steel (316Ti), exotic alloys
Pressure	Max 4 MPa* (580 PSI)
Temperature	Max 260°C (500°F)
Speed	Max 25 m/s (4921 FPM)
*Actual pressure limit may vary.	

D	In	D3	D5	D6	L1	L2	M	G
24								
25	1	58,0	80,0	104,0	85,0	73,0	13,0	2 x 3/8 GAS
28	1,125	61,5	80,0	104,0	85,0	73,0	13,0	2 x 3/8 GAS
30		63,0	90,0	110,0	85,0	73,0	13,0	2 x 3/8 GAS
32	1,25	65,5	100,0	110,0	85,0	73,0	13,0	2 x 3/8 GAS
33								
35	1,375	68,0	100,0	128,0	85,0	73,0	13,0	2 x 3/8 GAS
38	1,5	72,0	100,0	128,0	85,0	73,0	13,0	2 x 3/8 GAS
40		73,0	100,0	128,0	85,0	73,0	13,0	2 x 3/8 GAS
43	1,625	75,5	106,0	142,0	98,0	85,0	14,0	2 x 3/8 GAS
45	1,75	77,8	106,0	142,0	98,0	85,0	14,0	2 x 3/8 GAS
48	1,875							
50	2	82,8	120,0	154,0	98,0	85,0	14,0	2 x 3/8 GAS
55	2,125	87,0	120,0	172,0	98,0	85,0	14,0	2 x 3/8 GAS
58	2,25	93,0	120,0	172,0	98,0	85,0	17,0	2 x 3/8 GAS
60								
	2,375							
65	2,5	101,5	134,0	180,0	98,0	85,0	17,0	2 x 3/8 GAS
	2,625							
70	2,75	108,0	134,0	180,0	98,0	85,0	17,0	2 x 3/8 GAS
75	2,875	120,5	148,0	200,0	98,0	85,0	19,0	2 x 3/8 GAS
	3							
80	3,125	130,0	148,0	200,0	105,0	91,0	19,0	2 x 3/8 GAS
85	3,25							
	3,375	132,8	160,0	220,0	105,0	91,0	20,0	2 x 3/8 GAS
90	3,5	140,8	160,0	220,0	105,0	91,0	20,0	2 x 3/8 GAS
	3,625							
95								
	3,75							
	3,875	146,5	176,0	240,0	105,0	91,0	20,0	2 x 3/8 GAS
100	4							



All technical specifications contained in these technical data sheets are intended as guidelines. Sealtek s.r.l. must be informed about the precise conditions of application so that detailed information relating to specific cases can be provided.